

bus stop



From there it will be reassembled and re-launched for the second bored tunnel drive under the city.

Landscape comes back to life

The sandy cavity created in the landscape to allow construction of the Southern Suburbs Railway is gradually disappearing as the land next to the railway is rehabilitated.

The job of replanting about 100ha along the alignment began last year with 122,000 seedlings and 150kg of seed being planted.

This winter, a further 340,000 seedlings and 240kg of seed will be planted as soon as there is sufficient rain.

Next year another 150,000 plants will be used in bare spots along the railway line which need filling in.

The massive gardening task runs from Glen Iris all the way to Mandurah, including some immediately alongside the railway on the freeway median.

“Vegetation is mainly for aesthetic reasons,” said Landscape Coordinator Peter Bothwell.

“It also helps with stabilising the banks.”

As the railway tracks are laid, the landscaping team follows up and starts to rebuild the vegetation.

Prior to seeding and planting, the areas are mulched and machined with a bulldozer, preferably with swamp tracks, to create small pockets in which the seed and water can collect.

“Lack of rain has substantially reduced the time available to get the seedlings into the ground and for them to take,” Peter said.

“We also have to fit in with the tracklaying program so we might need to hold over some of the planting until next season.

“Last year’s plantings have been very successful with all areas of seed coming up and all plants planted as tubestock growing healthily.

“Most of the plants are WA natives which are a cross-section of plant communities adjacent to the railway line.”

Seedlings are sorted into batches matching up to plans at environmental contractor GHEMS’ nursery in Karnup.

From there, they are taken out and put into the corresponding ground as soon as planting conditions are favourable.

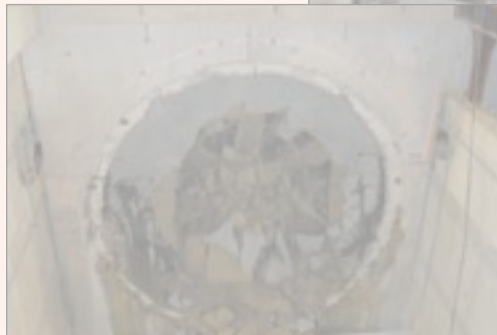
“The great partnership between contractors RailLink Joint Venture, GHEMS and NMR has made things relatively easy,” Peter said.

“Success is common goal because the rewards will be there for everyone.”

Landscape Coordinator Peter Bothwell with GHEMS Environmental Technician Tim Bielby



Tunnel boring - going, going, gone



rst Class Going in comfort Going in style Going More Going Through Going Under Going Shopping? Going Away Going Steady Going Places Going to Mandu