

# Environmental Weed Management



## Controlling weeds in our natural environment

GHEMS possess a full range of equipment, procedures and applications to manage environmental weeds, both chemically and mechanically, throughout Western Australia that occur in:

- Urban and Infrastructure Developments
- Remnant Vegetation Sites
- Mining and Quarrying
- Wetlands

### Chemical Equipment:

- 4WD trucks and light vehicles fitted with spray units
  - Dual remote reels
  - Large capacity
  - Spill kits
- ATVs (4WD motorbike) fitted with spray units
- Backpacks
- Wick wipers



### Mechanical Equipment:

- Brushcutters
- Chainsaws
- Hedge trimmers
- Seasonal teams of field staff conducting hand weeding

### GHEMS Holdings Pty Ltd

4 Duffy Street, Bassendean  
Western Australia 6054

Tel: (08) 9373 7100

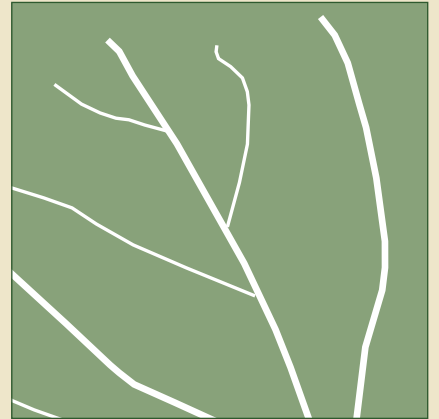
Fax: (08) 9373 7111

[enviro@ghems.com.au](mailto:enviro@ghems.com.au)

[www.ghems.com.au](http://www.ghems.com.au)

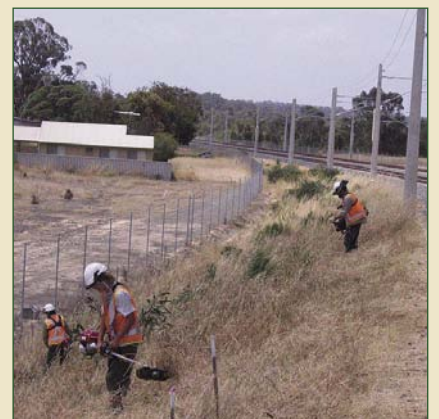
Ability to control a wide range of environmental weeds including:

- Legumes
- Annual and Perennial Grasses
- Broad-leaf
- Bulbous and Woody weeds
- Declared weeds



## Why choose GHEMS for your environmental weed management –

- ▶ GHEMS is commercially registered with the Department of Health and complies with its code of practice for its storage, use and disposal of chemicals.
- ▶ The company has an Environmental Management System (EMS) in place and operates with strict corporate guidelines.
- ▶ Staff are trained and competent in the use of both selective and non-selective herbicides.



**Further information, prices and availability**  
**Call GHEMS on (08) 9373 7100 or email [enviro@ghems.com.au](mailto:enviro@ghems.com.au)**